

Your Food Waste Solution

WLR Environmental Consulting is proud to be the North American Distributor and Service provider of the ResteWolf food processor



RESTEWOLF FOOD PROCESSOR

The ResteWolf food processor is the first step in the process to take your **food wasted** to **food recycled**. As the North American distributor, we have created a service and recycling infrastructure to support the ResteWolf food processor to ensure a *closed loop* service offering.

WHAT FOODS CAN BE PROCESSED?

The ResteWolf food processor can process all foods including: fruits, vegetables, meats, bones, dairy, breads, fish, greases and oils.

COLLECTION

The ResteWolf food processor converts your food waste into a highly manageable *slurry* which is pumped to a holding tank.

Once the tank is full, one of our pumper trucks empties the tank via a sanitary hose system that minimizes any potential of spills.

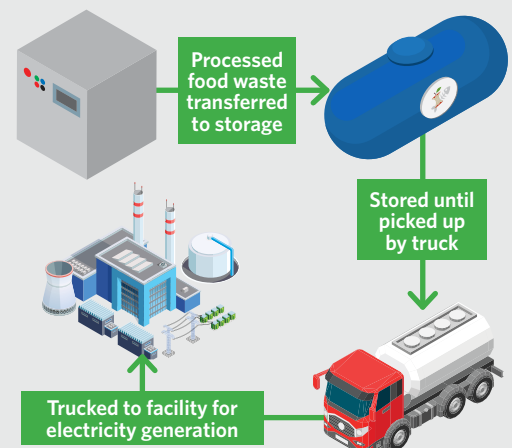
Collection schedules are derived from examining current food waste volumes. It is important to note that once your food waste is processed, you will experience a volume reduction in the 60% range.

RECYCLING

After your food waste is processed and collected, we deliver it to a Ministry of Environment-approved Anaerobic Digestion facility to be converted into electricity.

Not only are you keeping harmful greenhouse gases out of the atmosphere, you are helping to create environmentally-friendly electricity.

STEP-BY-STEP



KEY STATS

Processing capabilities: **500 L/hr** (half a metric tonne)

ResteWolf size: **26"** wide x **28"** deep x **36"** high

Tank size: Varies based on required configuration, a **4,000 L tank** requires floor space of roughly **28 sq. ft.**

Food waste conversion: **One metric tonne** of food waste converts to **1,000 L** of processed food waste.

Volume savings: Conversion to slurry reduces volume **up to 60%**

Tote displacement: Average customers will remove **15 to 20 totes** from back of store

WLR Environmental Consulting Inc.

daveraney@wlrconsulting.ca | 519-281-2141

wlrconsulting.ca